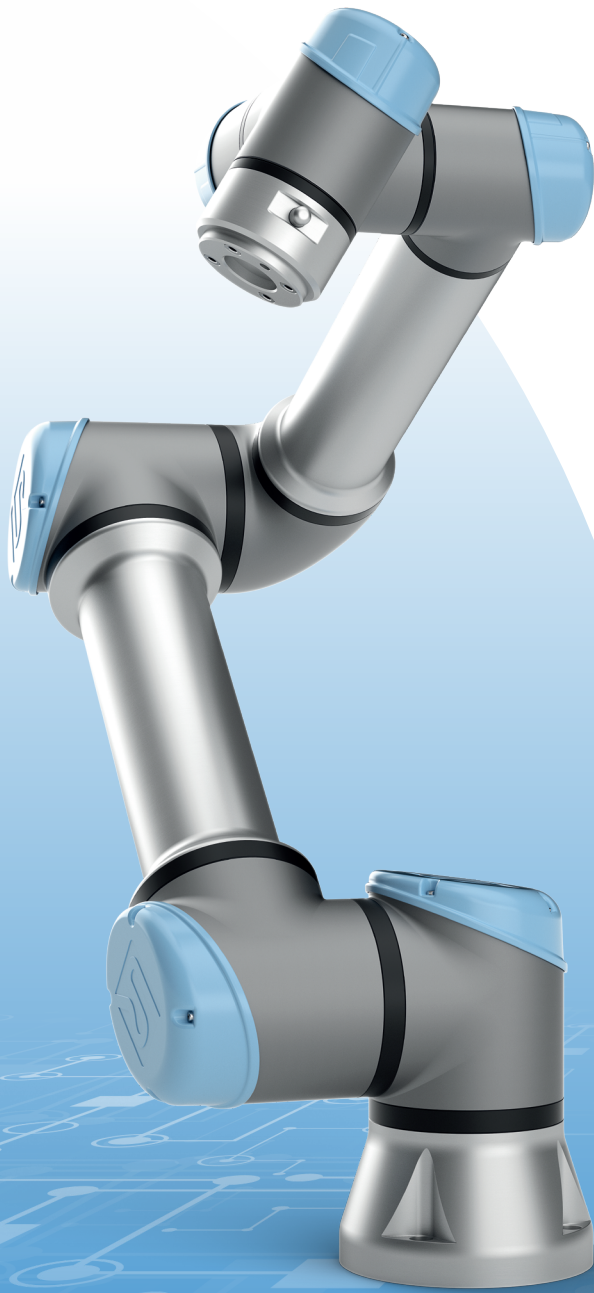




**UNIVERSAL ROBOTS**

**Meet the World's  
#1 Collaborative Robot**

# THE e-SERIES



PACKAGING AND PALLETIZING



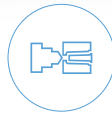
MACHINE TENDING



INDUSTRIAL ASSEMBLY



PICK AND PLACE



INJECTION MOLDING



GLUING, DISPENSING, WELDING



CERTIFIED PLUG AND PLAY PRODUCTS  
WITH **UR+** ECOSYSTEM



FREE ONLINE TRAINING PROGRAM

[universal-robots.com](http://universal-robots.com)

# SUPERCHARGE GROWTH WITH THE e-Series

GET AN EDGE OVER YOUR COMPETITORS WITH THE e-Series' FIVE KEY BENEFITS

## EASY PROGRAMMING

*87 minutes to turn anyone into a robot programmer.*

- Integrated Force Torque Sensor
- User friendly Teach Pendant
- Intuitive 3D interface
- Drag-and-drop functions

## FAST SET-UP

*The e-Series takes less than 60 minutes to unpack, mount, and program after completion of UR Academy Training.*

- Connects to a 110 VAC power outlet
- Intuitive user interface
- 20 industrial I/O connectors
- Ethernet connectivity
- Easy integration into almost any production set-up

## SAFE & COLLABORATIVE

*Bridge the gap between man and machine.*

- Customizable stopping times + stopping distance
- Collision detection
- 17 safety functions, all EN ISO 13849-1, Cat.3, PL d, certified by TÜV NORD
- ISO 10218-1 Cat 3, PLd, certified by TÜV NORD

## FLEXIBLE

*Infinite ways of deployment and task automation.*

- Universal Robots+ offers plug and play cutting edge products
- Lightweight – easy to relocate
- Mounts in any orientation
- Ability to save programs and redeploy to new tasks

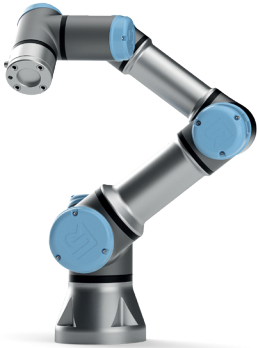
## FAST PAYBACK

*34 days - our fastest recorded payback worldwide.*

- Advanced collaborative robots - available to companies of any size
- Fully upgradable software platform for a lasting and worthy investment

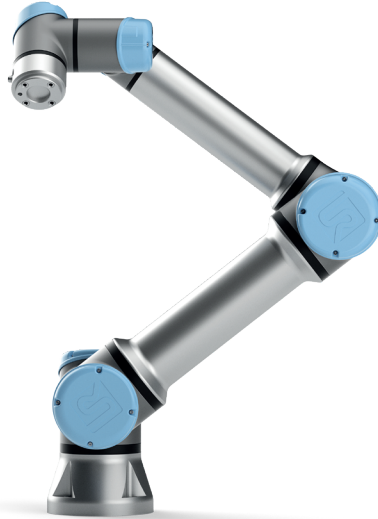
# MEET THE e-Series FAMILY

UR3e



**3 kg | 6.6 lb** Payload  
**500 mm | 19.7 in** Reach

UR5e



**5 kg | 11 lb** Payload  
**850 mm | 33.5 in** Reach



UR10e

**10 kg | 22 lbs** Payload  
**1300 mm | 51.2 in** Reach



- *Intuitive programming flow*
- *Light and responsive Teach Pendant*  
*Thin cable and wide screen*
- *Customizable stopping time and stopping distance*

## BY THE NUMBERS:

**<1** YEAR  
typical ROI

**135+** **CERTIFIED**  
Universal Robots+  
plug and play  
cutting edge  
products

**31,000+**  
cobots installed  
over 10 years



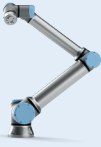
**20** **LANGUAGES**  
available on the  
Teach Pendant

### Universal Robots USA, Inc.

5430 Data Court, Suite 300  
Ann Arbor, Michigan 48108  
United States

Tel. +1 844-GO-COBOT or  
+1 844-462-6268

universal-robots.com  
ur.na@universal-robots.com

	 <b>UR3e</b>	 <b>UR5e</b>	 <b>UR10e</b>
<b>Performance</b>			
<b>Power consumption</b>	Approx. 100 W using a typical program	Approx. 200 W using a typical program	Approx. 350 W using a typical program
<b>Collaboration operation</b>	17 advanced adjustable safety functions incl. elbow monitoring. Remote Control according to ISO 10218	17 advanced adjustable safety functions incl. elbow monitoring. Remote Control according to ISO 10218	17 advanced adjustable safety functions incl. elbow monitoring. Remote Control according to ISO 10218
<b>Certifications</b>	EN ISO 13849-1, Cat.3, PL d, and EN ISO 10218-1	EN ISO 13849-1, Cat.3, PL d, and EN ISO 10218-1	EN ISO 13849-1, Cat.3, PL d, and EN ISO 10218-1
<b>F/T Sensor - Force, x-y-z</b>			
<b>Range</b>	30 N	50 N	100 N
<b>Resolution</b>	1.0 N	2.5 N	2.0 N
<b>Accuracy</b>	3.5 N	4.0 N	5.5 N
<b>F/T Sensor - Torque, x-y-z</b>			
<b>Range</b>	10 Nm	10 Nm	10 Nm
<b>Resolution</b>	0.02 Nm	0.04 Nm	0.02 Nm
<b>Accuracy</b>	0.10 Nm	0.30 Nm	0.60 Nm
<b>Ambient temperature range</b>	0-50°C*	0-50°C	0-50°C
<b>Humidity</b>	90%RH (non-condensing)	90%RH (non-condensing)	90%RH (non-condensing)
<b>Specification</b>			
<b>Payload</b>	3 kg / 6.6 lbs	5 kg / 11 lbs	10 kg / 22 lbs
<b>Reach</b>	500 mm / 19.7 in	850 mm / 33.5 in	1300 mm / 51.2 in
<b>Degrees of freedom</b>	6 rotating joints DOF	6 rotating joints DOF	6 rotating joints DOF
<b>Programming</b>	Polyscope graphical user interface on 12 inch touchscreen with mounting	Polyscope graphical user interface on 12 inch touchscreen with mounting	Polyscope graphical user interface on 12 inch touchscreen with mounting
<b>Movement</b>			
<b>Pose Repeatability</b>	+/- 0.03 mm, with payload, per ISO 9283	+/- 0.03 mm, with payload, per ISO 9283	+/- 0.05 mm, with payload, per ISO 9283
<b>Axis movement robot arm</b>	<b>Working range</b> <b>Maximum speed</b>	<b>Working range</b> <b>Maximum speed</b>	<b>Working range</b> <b>Maximum speed</b>
<b>Base</b>	± 360°                      ±180°/Sec.	± 360°                      ±180°/Sec.	± 360°                      ±120°/Sec.
<b>Shoulder</b>	± 360°                      ±180°/Sec.	± 360°                      ±180°/Sec.	± 360°                      ±120°/Sec.
<b>Elbow</b>	± 360°                      ±180°/Sec.	± 360°                      ±180°/Sec.	± 360°                      ±180°/Sec.
<b>Wrist 1</b>	± 360°                      ±360°/Sec.	± 360°                      ±180°/Sec.	± 360°                      ±180°/Sec.
<b>Wrist 2</b>	± 360°                      ±360°/Sec.	± 360°                      ±180°/Sec.	± 360°                      ±180°/Sec.
<b>Wrist 3</b>	Infinite                      ±360°/Sec.	± 360°                      ±180°/Sec.	± 360°                      ±180°/Sec.
<b>Typical TCP speed</b>	1 m/Sec. / 39.4 in/Sec.	1 m/Sec. / 39.4 in/Sec.	1 m/Sec. / 39.4 in/Sec.
<b>Features</b>			
<b>IP classification</b>	IP54	IP54	IP54
<b>ISO Class Cleanroom</b>	5	6	5
<b>Noise</b>	Less than 60 dB(A)	Less than 65 dB(A)	Less than 65 dB(A)
<b>Robot mounting</b>	Any Orientation	Any Orientation	Any Orientation
<b>I/O ports</b>	Digital in                      2 Digital out                      2 Analog in                      2 Analog out                      0 UART interface (9.6k-5Mbps)	Digital in                      2 Digital out                      2 Analog in                      2 Analog out                      0 UART interface (9.6k-5Mbps)	Digital in                      2 Digital out                      2 Analog in                      2 Analog out                      0 UART interface (9.6k-5Mbps)
<b>I/O power supply in tool</b>	12V/24V 600mA continuous, 2A for shorter periods	12V/24V 600mA continuous, 2A for shorter periods	12V/24V 600mA continuous, 2A for shorter periods
<b>Physical</b>			
<b>Footprint</b>	Ø 128 mm	Ø 149 mm	Ø 190 mm
<b>Materials</b>	Aluminium, Plastic, Steel	Aluminium, Plastic, Steel	Aluminium, Plastic, Steel
<b>Tool (end-effector) connector type</b>	M8   M8 8-pin	M8   M8 8-pin	M8   M8 8-pin
<b>Cable length robot arm</b>	6 m / 236 in	6 m / 236 in	6 m / 236 in
<b>Weight including cable</b>	11.2 kg / 24.7 lbs	20.6 kg / 45.4 lbs	33.5 kg / 73.9 lbs



**UNIVERSAL ROBOTS**

# TECHNICAL DETAILS

## Control Box

### Features

<b>IP classification</b>	IP44
<b>ISO Class Cleanroom</b>	6
<b>Ambient temperature range</b>	0-50°
<b>I/O ports</b>	Digital in                      16 Digital out                      16 Analog in                      2 Analog out                      2 500 Hz control, 4 separated high speed quadrature digital inputs
<b>I/O power supply</b>	24V 2A
<b>Communication</b>	Control frequency: 500 Hz ModbusTCP: 500 Hz signal frequency ProfNet and EthernetIP: 500 Hz signal frequency USB ports: 1 USB 2.0, 1 USB 3.0
<b>Power source</b>	100-240VAC, 47-440Hz
<b>Humidity</b>	90%RH (non-condensing)

### Physical

<b>Control box size (WxHxD)</b>	475 mm x 423 mm x 268 mm 18.7 in x 16.7 in x 10.6 in
<b>Weight</b>	
<b>UR3e</b>	Max 13 kg / 28.7 lbs
<b>UR5e</b>	Max 13.6 kg / 30.0 lbs
<b>UR10e</b>	Max 13.6 kg / 30.0 lbs
<b>Materials</b>	Steel

## Teach Pendant

### Features

<b>IP classification</b>	IP54
<b>Humidity</b>	90%RH (non-condensing)
<b>Display resolution</b>	1280 x 800 pixels
<b>Physical</b>	
<b>Materials</b>	Plastic
<b>Weight including 1m of TP cable</b>	1.6 kg / 3.5 lbs
<b>Cable length</b>	4.5 m / 177.17 in

## Get started with Universal Robots today

Universal Robots has local offices and a worldwide network of channel partners.

[universal-robots.com](http://universal-robots.com)

+1 844-462-6268

[ur.na@universal-robots.com](mailto:ur.na@universal-robots.com)

\* The robot can work in a temperature range of 0-50°C. At a high continuous joint speed, ambient temperature is reduced.