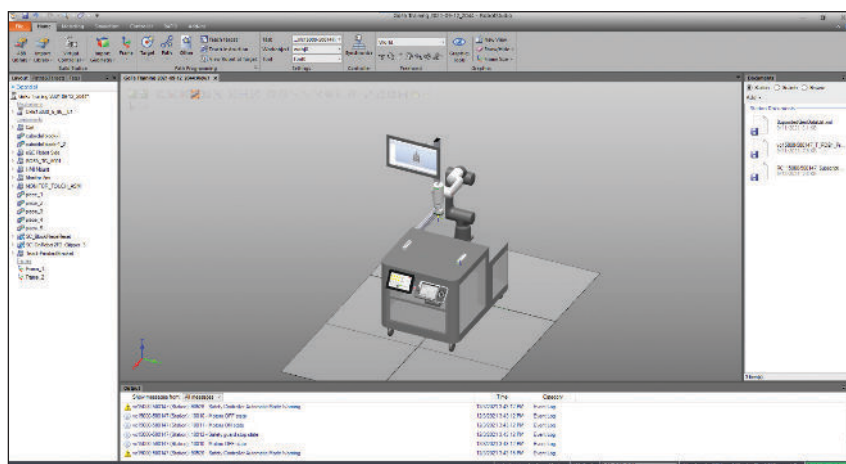


DATA SHEET

Cobot FlexTrainer



Compatible robots for the cobot FlexTrainer:

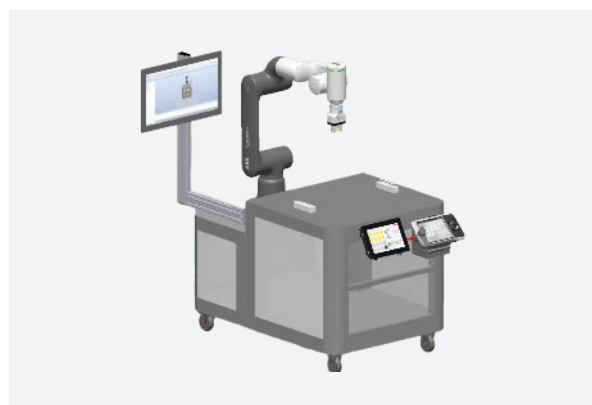
- CRB 15000 GoFa
- CRB 1100 SWIFTI
- IRB 14000 Yumi
- IRB 14050 Single Arm Yumi

Features and Benefits

- The cobot FlexTrainer was designed specifically for education and fits through a standard door (34" height x 45" length x 33" width)
- The user-friendly teach pendent includes Wizard easy programming - an easy graphical drag and drop programming interface for your robot. No specialized training or programming skills are required to use the program
- The OmniCore controller - Industry's most versatile and powerful controller that delivers the ultimate value in flexibility, connectivity and performance
- The OmniCore controller is enclosed within the cart for noise reduction
- The tabletop allows users to attach/detach work parts
- ABB donation of 100-seat network license of RobotStudio provided to educators along with access to all ABB PowerPacs (\$150k value)
- The cells are available in a virtual computer format as identical replicas of the real cell. With RobotStudio software, it can be programmed off-line on a personal computer

Additional Options

- Integrated vision system
- B&R touchscreen HMI
 - Great way to interact with the robot while it's operating
 - View I/O statuses
 - View robot statuses
 - Display and view curriculum materials, PDFs, manuals, and more



Compatible robots for the cobot FlexTrainer and their specifications

CRB 15000 - GoFa



Robot version	Reach (m)	Payload (kg)	Armload (kg)
CRB 15000	950	5	No armloads*
Number of axes	6		
Protection	IP54		
Mounting	Any angle, including table mounting, wall mounting and ceiling mounting		
Controller	OmniCore C30		
Customer power supply	4 signals (for IO, Fieldbus or Enthernet)		
Tool flange	Standard ISO 9409-1-50		
Functional safety	SafeMove Collaborative included All safety functions certified to Category 3, PL d		

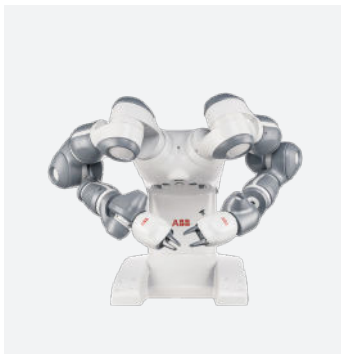
* See product specification for details.

CRB 1100 - SWIFTI



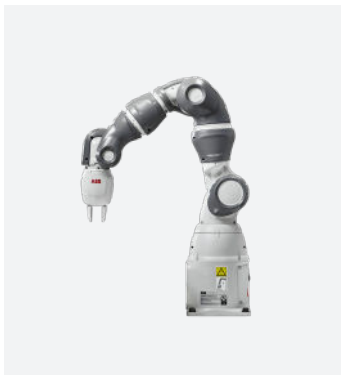
Robot version	Reach (m)	Payload (kg)	Armload (kg)
CRB 1100-4/0.475	0.475	4	0.5
CRB 1100-4/0.58	0.58	4	0.5
Number of axes	6		
Protection	Standard IP40		
Mounting	Any angle		
Controller	OmniCore C30		
Integrated signal and power supply	Up to 12 signals (C1 + C2) on upper arm		
Integrated air supply	4 air on wrist (max. 6 Bar)		
Integrated ethernet	One 1000 Base-T ethernet port (C2)		
Tool flange	Standard ISO 9409-1-31.5-4 M5		
Functional safety	SafeMove Collaborative included All safety functions certified to Category 3, PL d		

IRB 14000 – Yumi



Robot version	Reach(m)	Payload (kg)	Armload (kg)
IRB 14000-0.5/0.5	559	500	No armloads
Number of axes	14		
Protection	Std: IP30 and Clean room		
Mounting	Table		
Controller	Integrated IRC5		
Customer power supply	24V/1A supply		
Customer signals	4 signals (for IO, Fieldbus or Ethernet)		
Integrated air supply	1 per Arm on tool Flange (4 Bar)		
Functional safety	SafeMove Collaborative included All safety functions certified to Category B, PL b		

IRB 14050 - Single Arm Yumi



Robot version	Reach (m)	Payload (kg)	Armload (kg)
IRB 14050-0.5/0.5	559	500	No armloads
Features			
Integrated signal and power supply	24V Ethernet or 4 Signals		
Integrated air supply	4 Bar		
Integrated ethernet	One 100/10 Base-TX ethernet port		
Robot mounting	All angles, including table mounting, wall mounting and ceiling mounting		
Degree of protection	IP30		
Functional safety	PL d Cat 3 Protective stop and emergency stop; SafeMove as option		
Controller	OmniCore		



Scan the QR code shown to join our academic network:

- Learn more about development and product updates
- Participate in discussions on market trends
- Share projects your school is working on using ABB robots
- And more!

ABB Ltd.
For more information about our program please contact: Karin Polasek
Inside Sales Representative
Email: Karin.G.Polasek@us.abb.com
Call: +1 248-391-8683

abb.com/robotics

We reserve the right to make technical changes or modify the contents of this document without prior notice. With regard to purchase orders, the agreed particulars shall prevail. ABB AG does not accept any responsibility whatsoever for potential errors or possible lack of information in this document.

We reserve all rights in this document and in the subject matter and illustrations contained therein. Any reproduction, disclosure to third parties or utilization of its contents – in whole or in parts – is forbidden without prior written consent of ABB AG. Copyright© 2022 ABB. All rights reserved.