

VIS-101 Artificial Vision Training System

The Vision Training System provides a hardware solution that introduces the fundamentals of artificial vision. The unit provides components that are used in industrial applications, allowing participants to perform experiments in camera installation, electrical connections, and configuration of vision jobs via software.



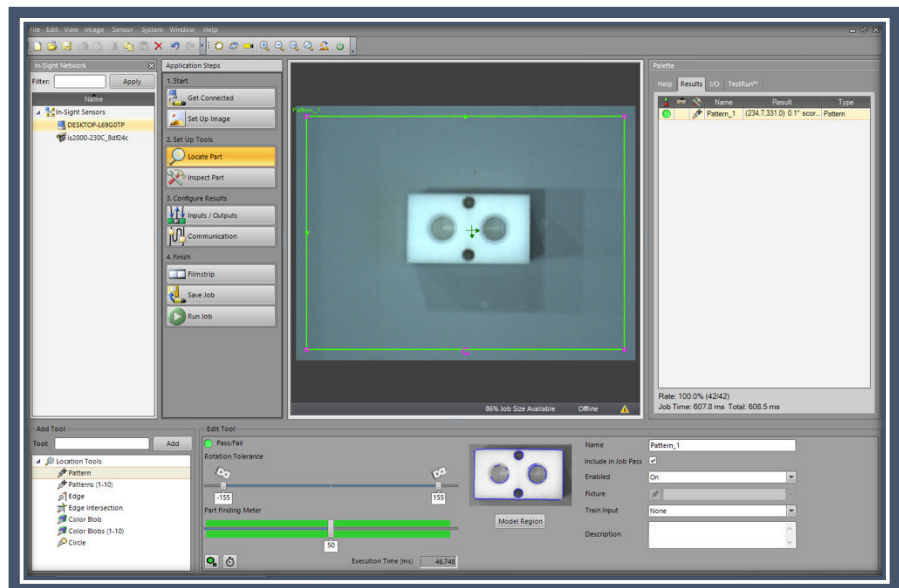
Model Shown with Cognex Insight 7000 and CompactLogix

Base System Includes:

- Camera Base Frame
- Motor Driven Table
- Telescoping Camera Mount
- Control Wiring Frame
- Power Components
 - 120Vac Power Entry
 - 24Vdc Power Supply
 - Network Switch
- Operator Control Devices
 - (1) Red Pushbutton
 - (2) Green Pushbuttons
 - (1) 2-Position Selector
 - (2) Red Indicators
 - (2) Green Indicators
- Terminal Block Connections
- Camera Software

Add-on Options:

- Camera Options
 - IFM
 - Cognex
 - Keyence
 - Sick
 - Banner
 - Omron
- PLC Options
 - AB MicroLogix
 - AB CompactLogix
 - Siemens S7-1200
 - Siemens S7-1500
 - Any Other Brand Upon Request



Cognex Insight Vision Software