



www.smctraining.com



IT-SMCTwin-400-V1-2

SMCTwin-400

Tool for the development and use of digital twins

EN

EN SMCTwin-400 - Emulate real system behaviour with SMCTwin-400 digital twins.

SMCTwin-400 is an online emulation platform where, through annual subscription licences, you will be able to develop and control your digital twins and work with some of those created for SMC International Training's didactic equipment.

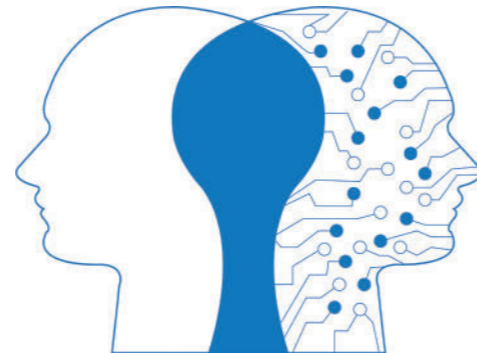
Students will be able to create PLC or HMI programs and connect them to the digital twin to experiment with the result.

SMCTwin-400 INCLUDES:

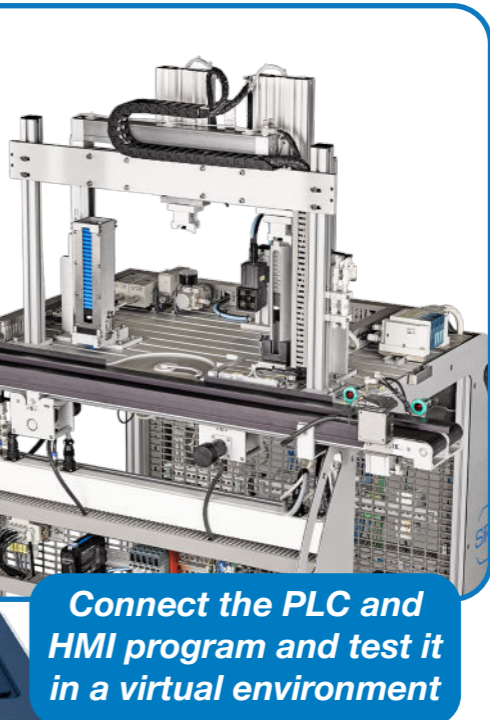
- The possibility of developing and testing your own digital twins
 - A pack with different digital models in SMC International Training systems.*

* Visit our website www.smctraining.com to see which models are included in the pack

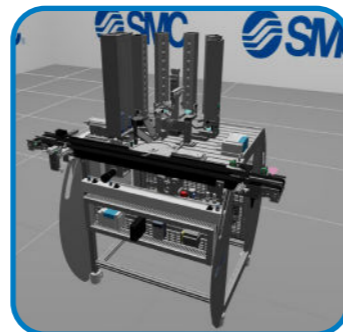
SMCTwin-400 - Tool for the development and use of digital twins



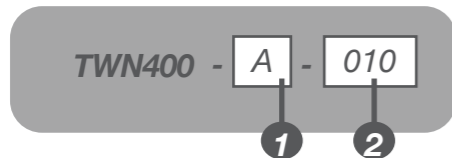
Develop and use digital twins in real time



Connect the PLC and HMI program and test it in a virtual environment



HOW TO ORDER



Select one

1 License type

- A** SMCTwin-400 Development & Pack applications - first subscription (1 year)
- B** SMCTwin-400 Development & Pack applications - subscription renewal (1 year)

Select one

2 Number of simultaneous users

- 010** 10 seats
- 020** 20 seats
- 040** 40 seats
- 060** 60 seats
- 100** 100 seats
- 150** 150 seats
- 200** 200 seats

*For other quantities, please, consult

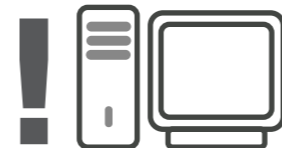
Important information: PLC and HMI programs and programming software are not included

BENEFITS

- **Accessible and available 24/7**
 - ~ Greater optimisation and time management
 - ~ From anywhere with internet access
- **Digitisation**
 - ~ Several users working simultaneously
- **High fidelity graphic representation**
 - ~ Immediate response from the activity in process to apply corrections
- **Sustainability**
 - ~ Optimisation of resources: complementary to physical equipment



MINIMUM REQUIREMENTS



- Processor: Intel Core i5 or equivalent
- Graphics card: Intel(R) HD Graphics 530 or equivalent
- RAM: 16 GB

* The content of this document may change without prior notification